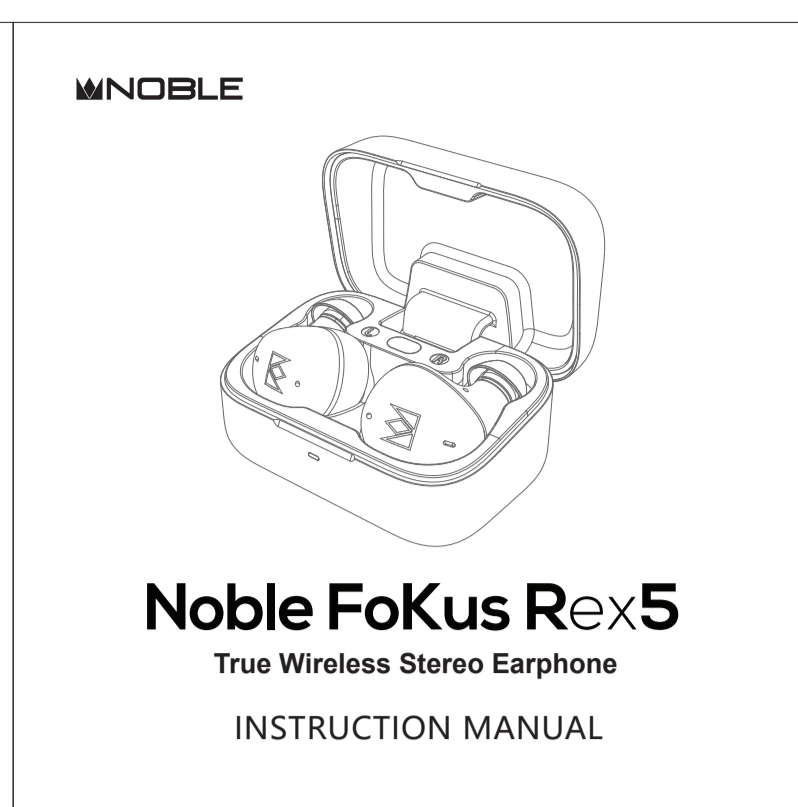
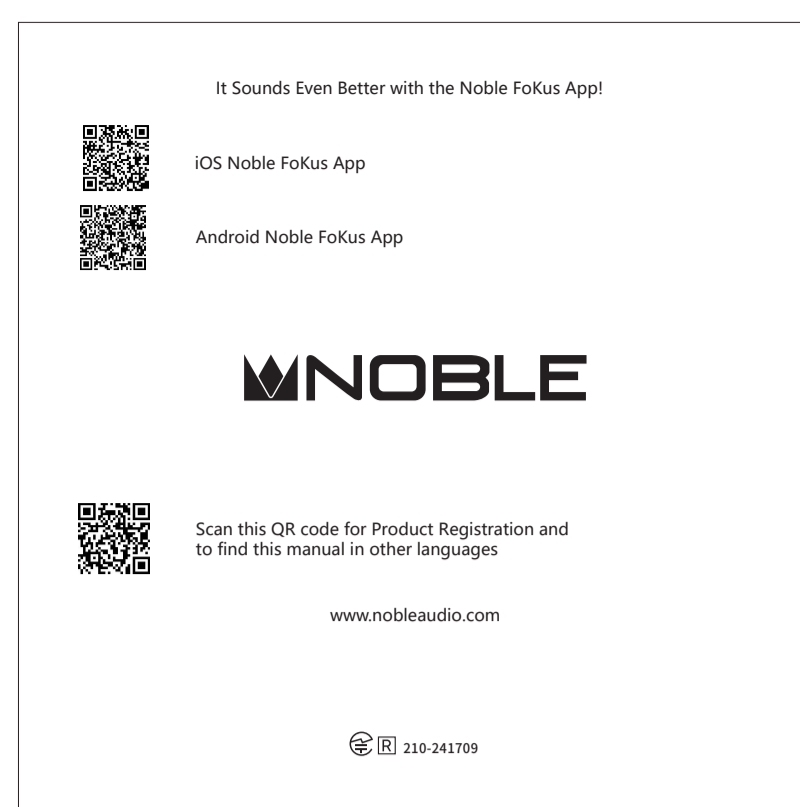
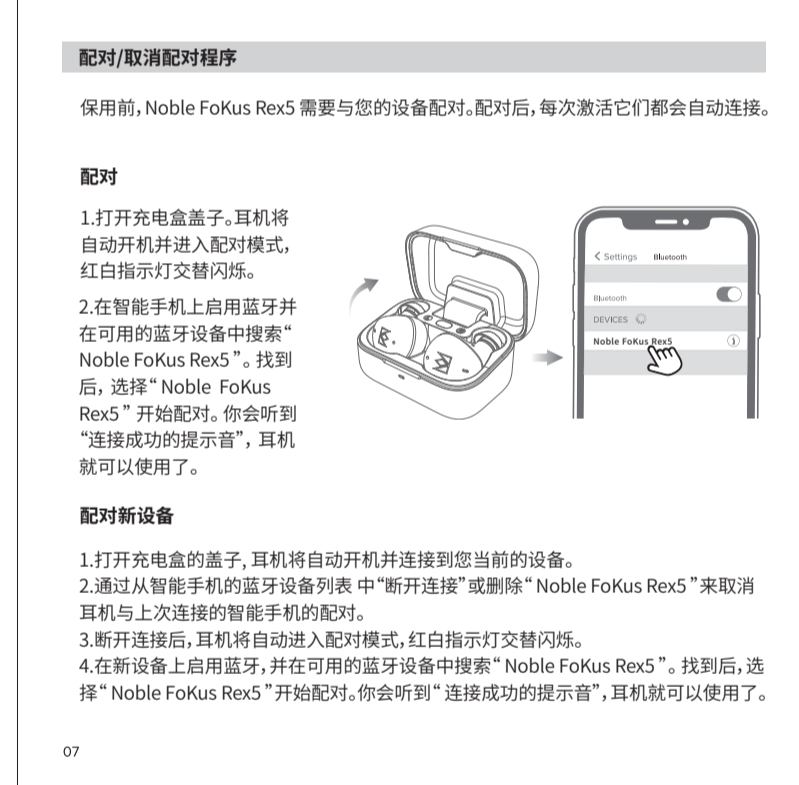
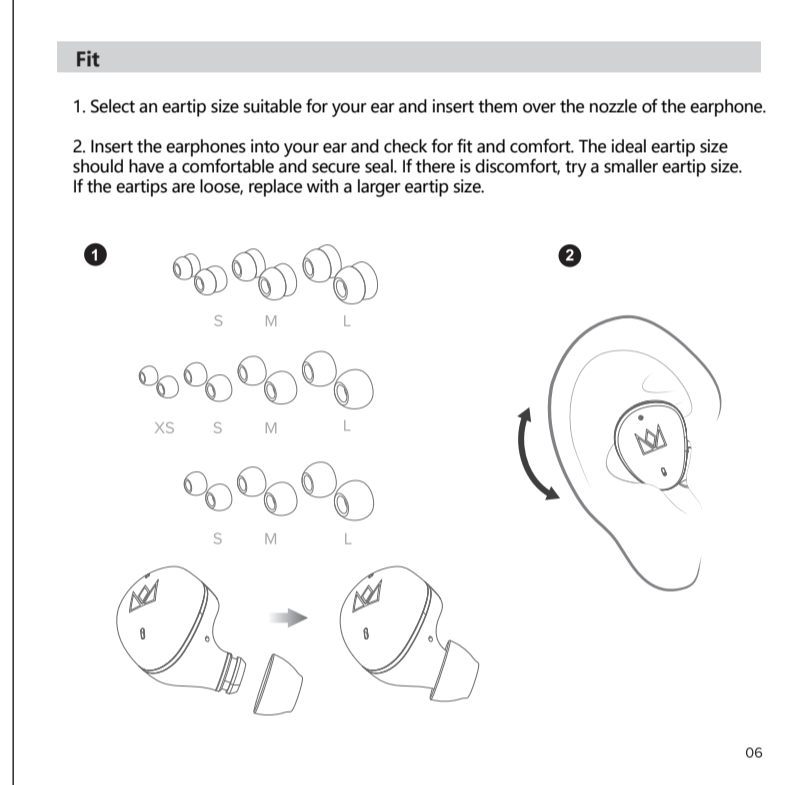
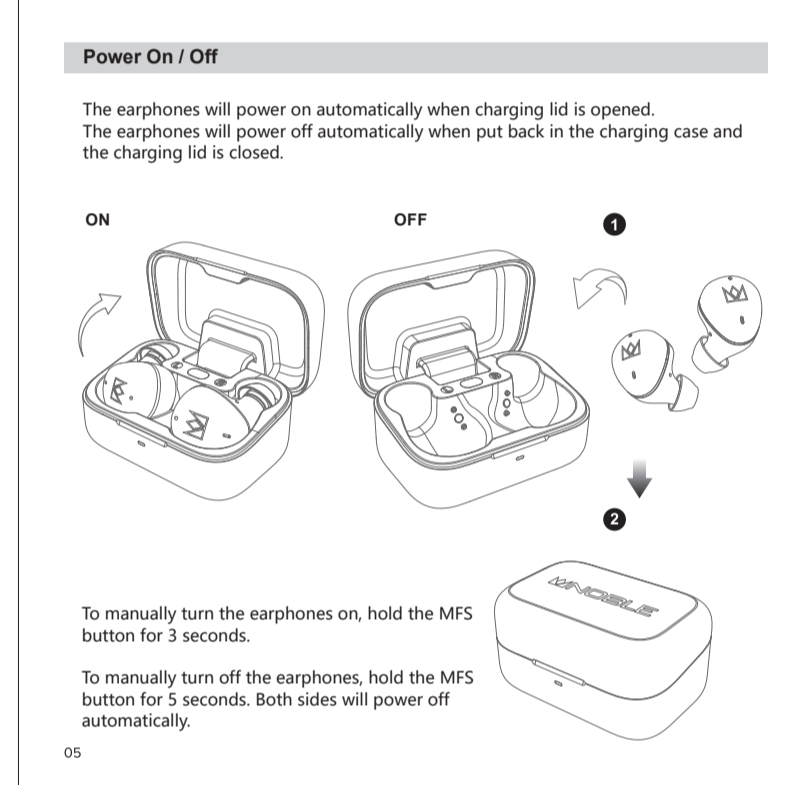
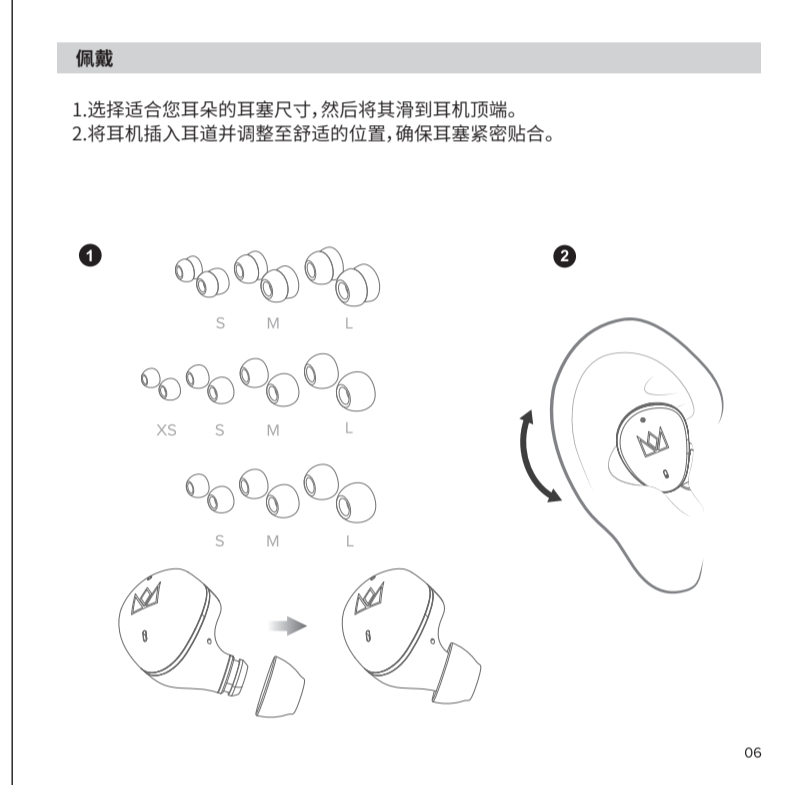
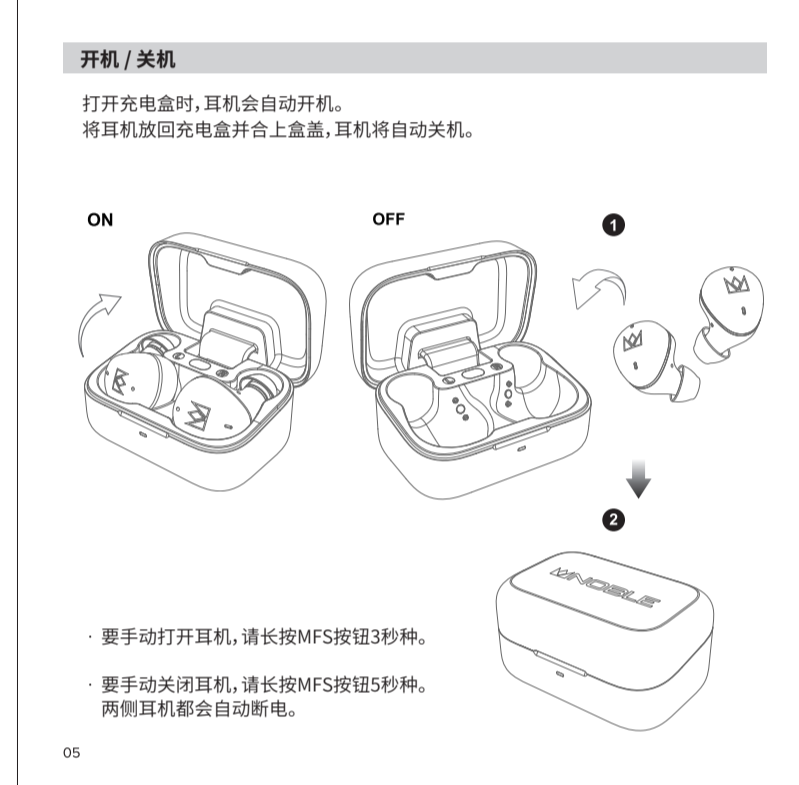
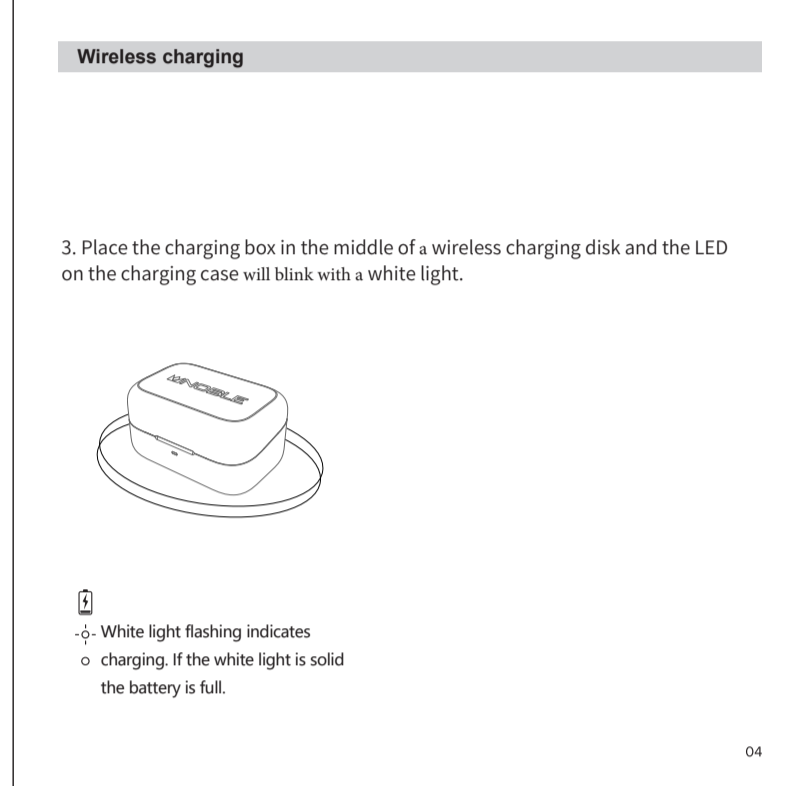
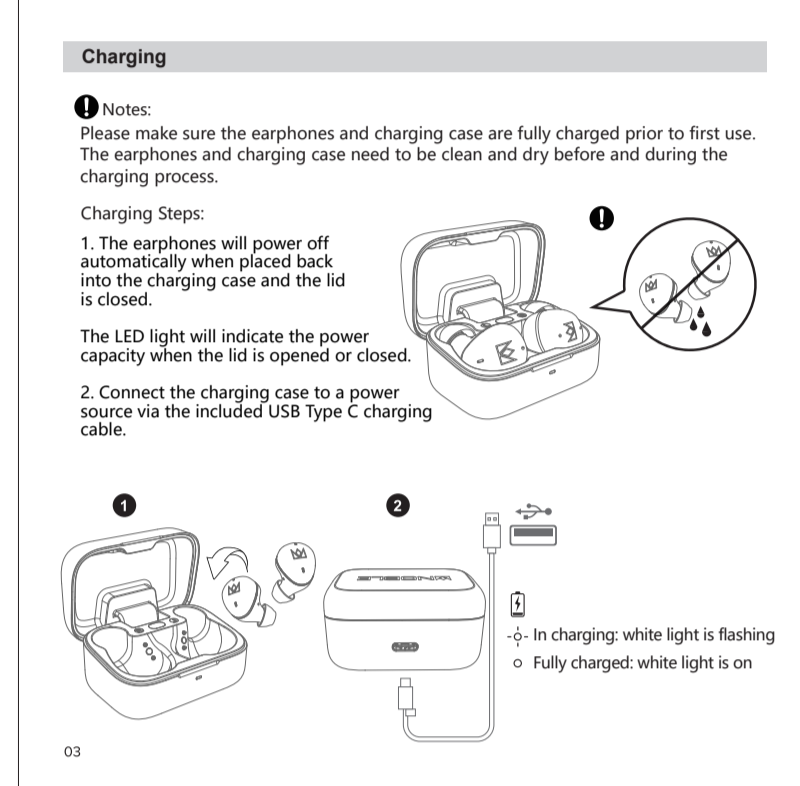
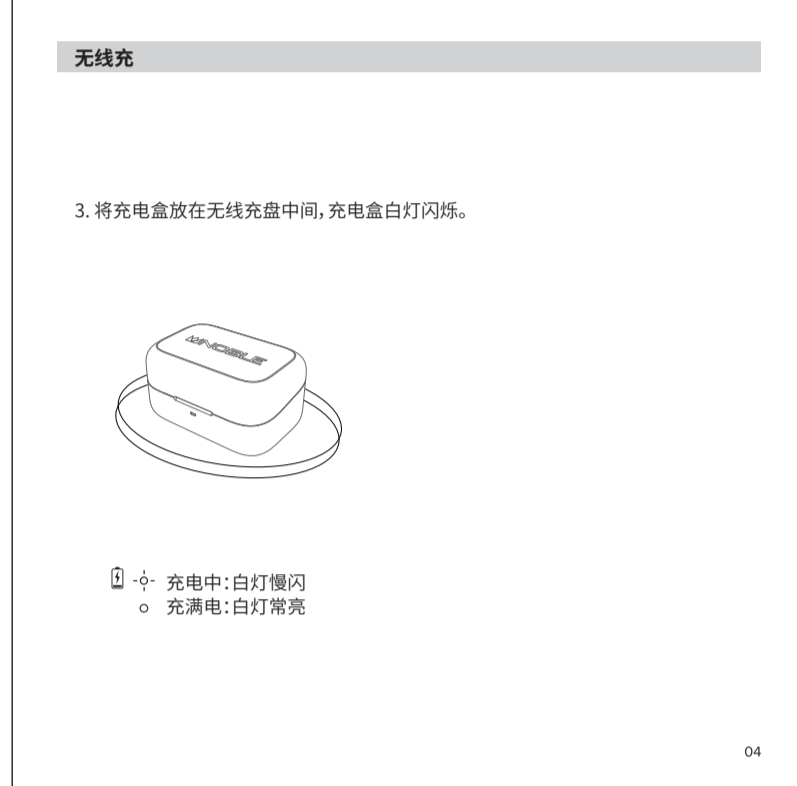
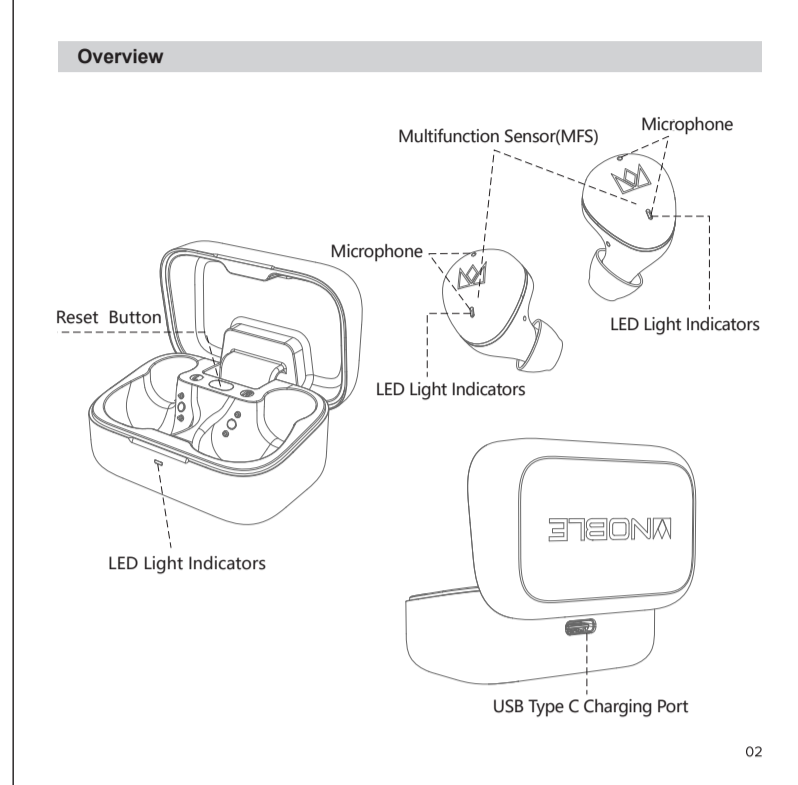
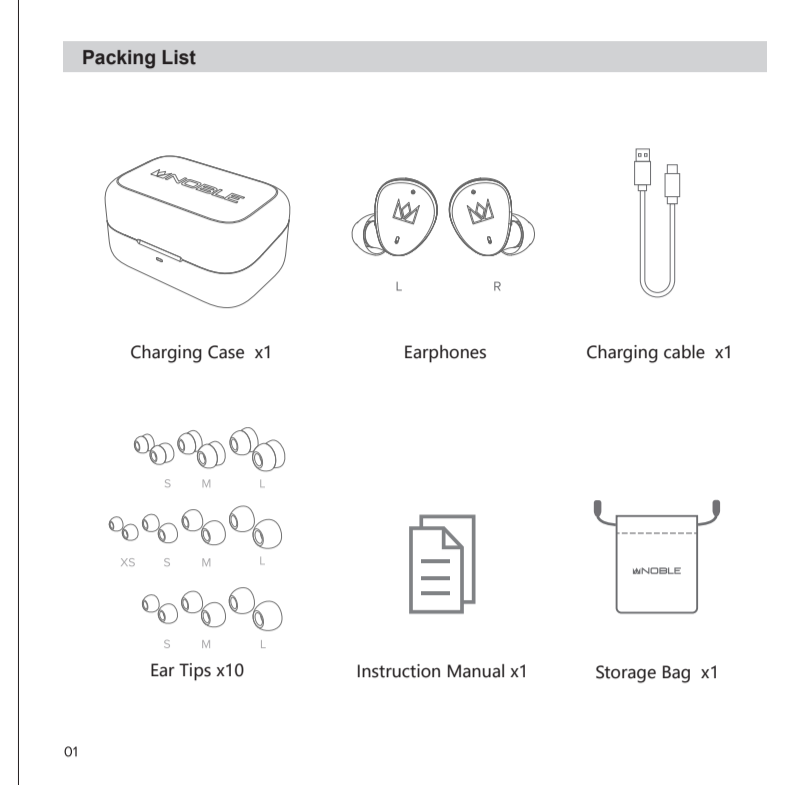
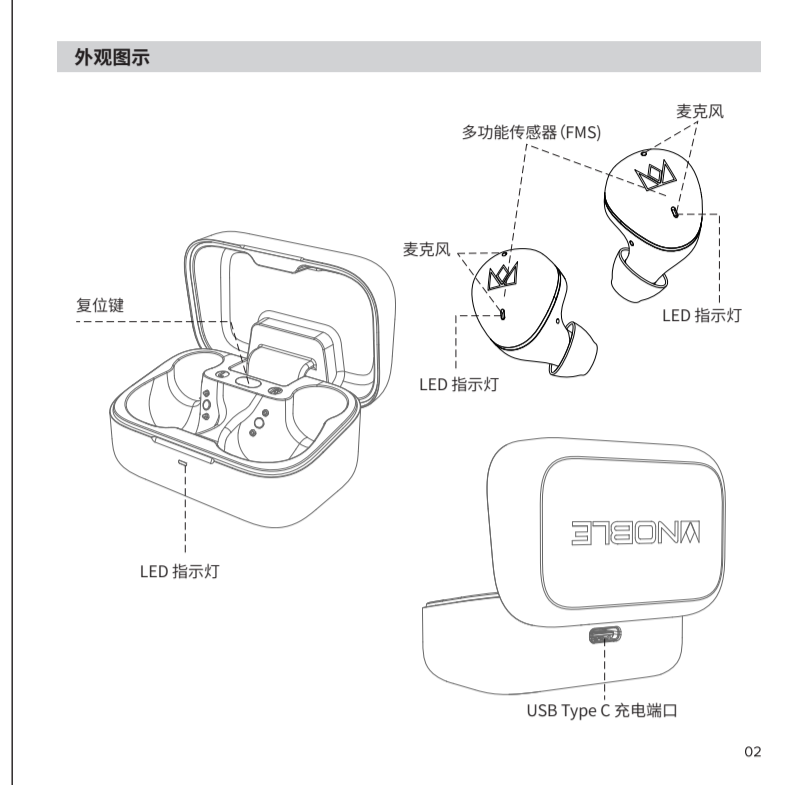
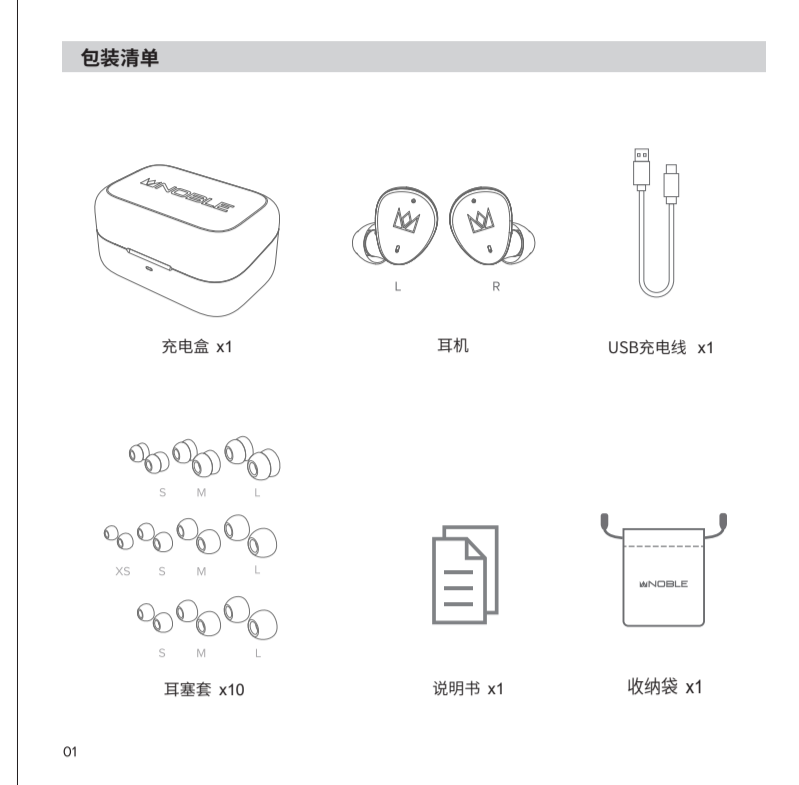


105mm

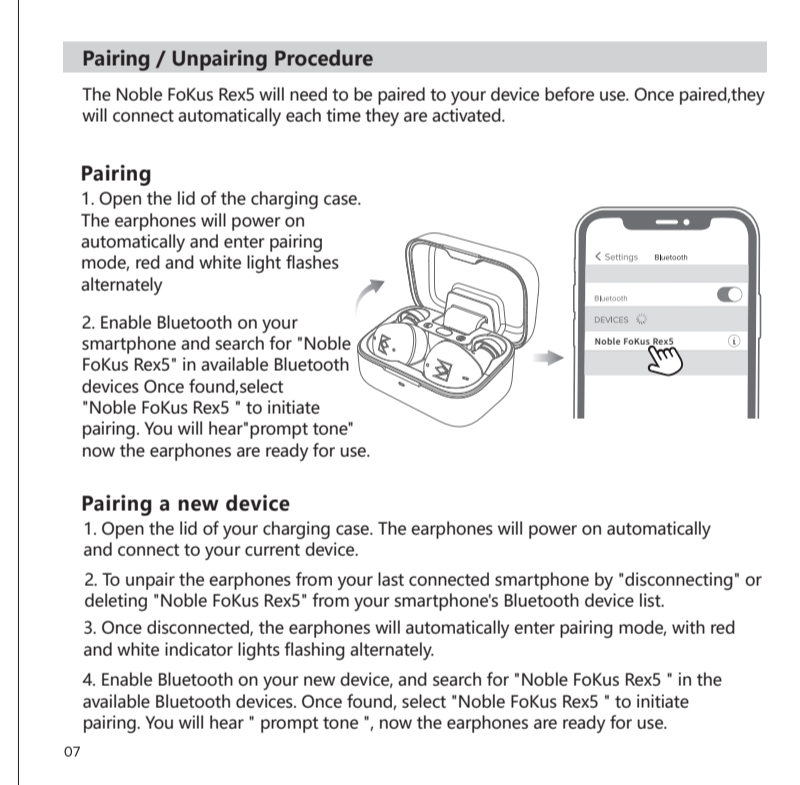


105mm



控制

播放/暂停	单击 MFS(L/R)
提高音量 +	三击 MFS(L)
音量减小 -	双击 MFS(L)
上一曲	三击 MFS(R)
下一曲	双击 MFS(R)
接听/挂断电话	单击 MFS(L/R)
拒接来电	长按 MFS 2秒 (L/R)
语音助手功能 - Siri / Google	长按 MFS 2秒 (R)
降噪模式	长按 MFS 2秒 (L)

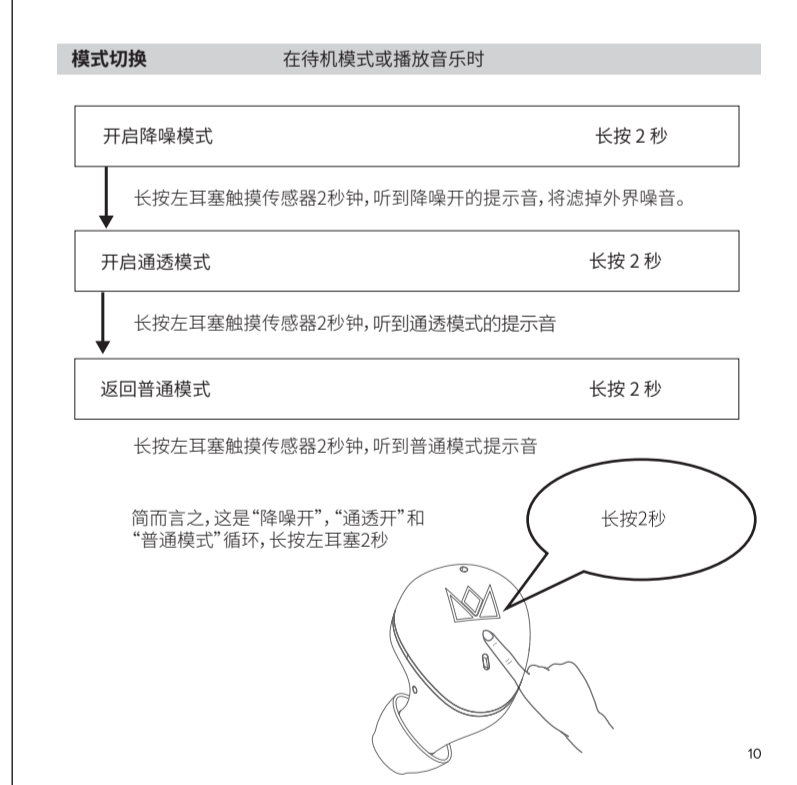


Operation

Play/Pause	Single Click MFS (L/R)
Volume Up+	Triple Click MFS (L)
Volume Down-	Double Click MFS (L)
Previous Track	Triple Click MFS (R)
Next Track	Double Click MFS (R)
Answer Call/Hang Up	Single Click MFS (L/R)
Reject Call	Press the MFS for 2 seconds (L/R)
Voice Assistant function - Siri/Google	Press the MFS for 2 seconds (R)
ANC mode	Press the MFS for 2 seconds (L)

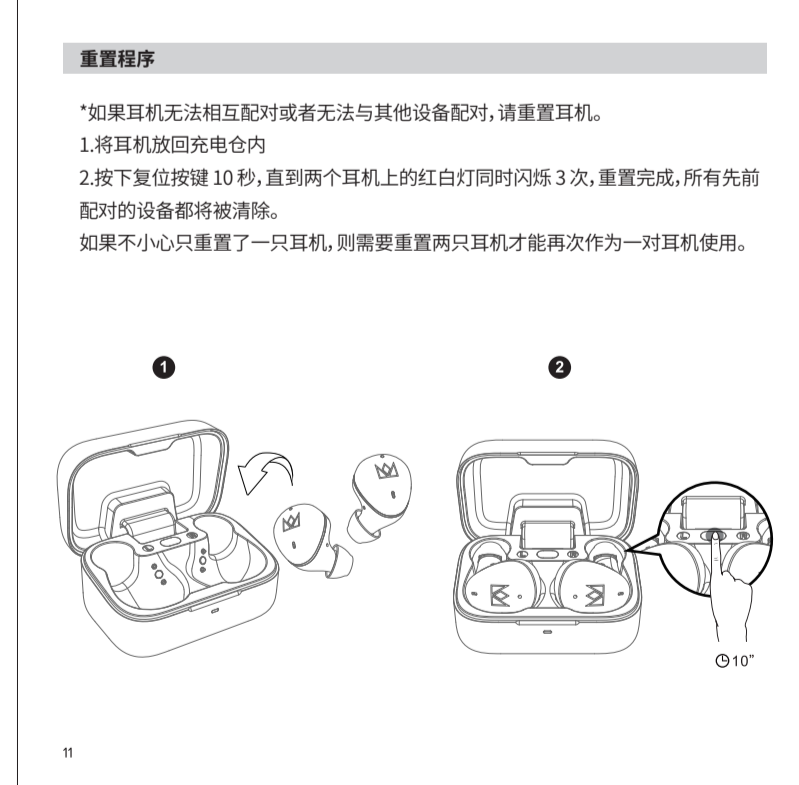
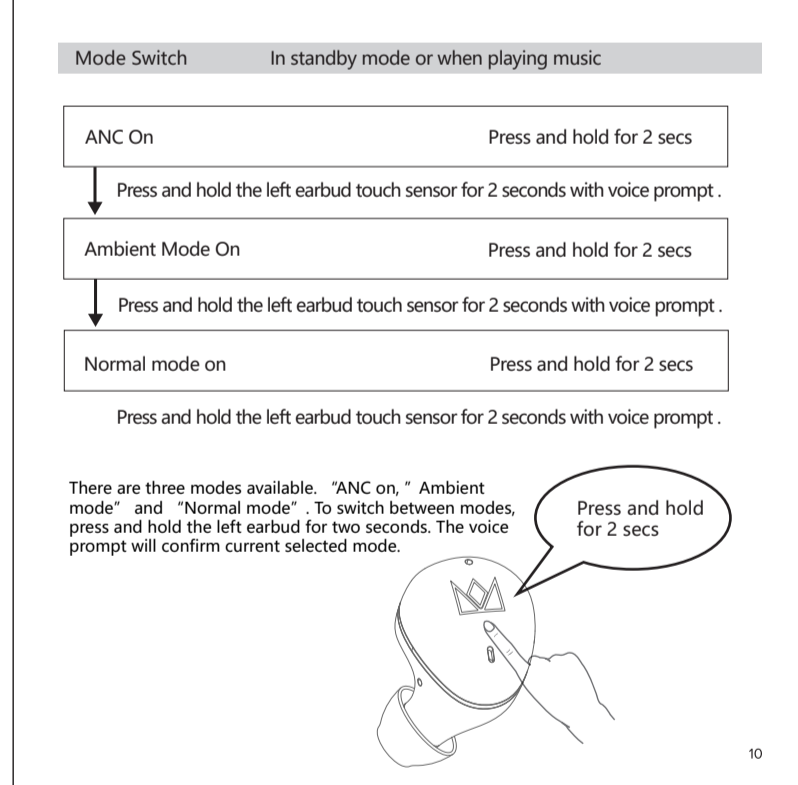
LED指示灯

使用场景	LED指示灯状态
开机	白色灯亮一秒
关机	红色灯亮一秒
配对	红白灯交替闪烁
配对成功	白灯亮5秒
播放音乐或通话	LED灯闪烁, LED灯关闭
耳机充电	红色灯每两秒闪烁两次
耳机放入充电盒中	红色灯亮
耳机放入充电盒充电后	红色灯关闭
充电盒充电中	白灯闪烁
充电盒充电后	白灯常亮



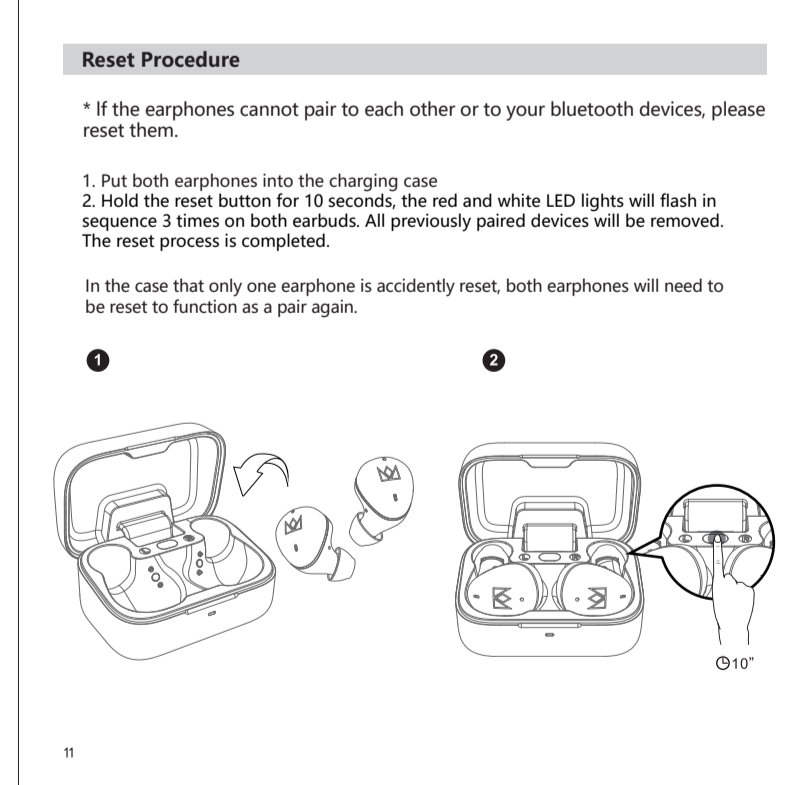
LED Indicator Lights

Usage Scenario	LED Indicator Status
Power On	White LED light flashes for one second
Power Off	Red LED light flashes for one second
Pairing	Red and white light flashes alternately
Pairing succeeds	White LED remains on for 2 seconds
Playing music or on calling	LED light off
Low Power	Red LED light flashes twice every 5 seconds
Earphones inserted into charging case	Red LED light on
Earphones fully charged in the charging case	LED light off
Case is charging	White light is flashing slowly
Case full charged	White LED light on



产品规格

产品型号	Noble FoKus Rex5
蓝牙版本	V5.4
支持协议	A2DP, AVRCP, HFP
音频传输	SBC, AAC, Aptx Adaptive
驱动单元	10mm Dynamic, 6mm Planar and 3 BA
频率响应	20Hz-40KHz
连接距离	>10m
耳机电池容量 (单个)	45mAh
充电保护电容容量	500mAh
播放时间 (因音量和内容而异)	5H (降噪开), 7H (降噪关)
充电时间	耳机: 1.5小时; 充电盒: 2小时
充电接口类型	Type C
电源输入	5V=1A



Specification

Product Model	Noble FoKus Rex5
Bluetooth Version	V5.4
Bluetooth Profile	A2DP, AVRCP, HFP
Audio Codec	SBC, AAC, Aptx Adaptive
Driver Architecture	10mm Dynamic, 6mm Planar and 3 BA
Frequency Response	20Hz-40KHz
Connection Distance	>10m
Earphone Battery Capacity	45mAh
Charging Case Battery Capacity	500mAh
Play Time	Up to 5 hours with ANC on and 7 hours with ANC off
Charging Time	Earbuds = 1.5 hours, Charging case = 2 hours
Charging Port	Type C
Power Input	5V=1A

声明和警告
在配对新设备之前请断开当前设备。

警告!
长期暴露在高噪声环境中可能会导致永久性听力损伤。
请勿在使用电子设备的地方使用 Noble FoKus Rex5 耳机。
如果您有心脏起搏器或其他电子设备, 请在佩戴 Noble FoKus Rex5 耳机时咨询您的医生。
此包装包含小零件, 可能对小孩造成危险。
请勿擅自拆卸 Noble FoKus Rex5, 因为它包含锂电池, 拆卸可能会导致触电、火灾或人身伤害的危险。
避免在过高或过低温度环境中使用。
任何未经授权的人员拆卸或试图维修 Noble FoKus Rex5, 都会导致 Noble FoKus Rex5 的保修失效。
本产品不适用于在水中或过于潮湿的环境中使用, 请勿放入或浸没在水或其他液体中, 否则将导致任何保修失效, 并可能对产品造成永久性损坏。

FCC 信息
FCC ID: 2AT8X-NFOKUSREX5
本设备符合 FCC 第 15 部分的规定。操作须符合以下两个条件:
1. 本设备不得产生有害干扰。
2. 本设备必须接受任何收到的干扰, 包括可能导致的意外操作。
警告: 未经制造商授权的修改可能会导致用户丧失操作本设备的权利。
注意: 本设备经过测试, 符合 FCC 第 15 部分对 B 类数字设备的限制要求。这些限制旨在提供合理的保护, 以防止住宅环境中的有害干扰。本设备会产生、使用、并辐射无线电波。如果按照说明进行安装和使用, 可能对无线通信造成有害干扰。然而, 我们不能保证在特定安装条件下不会发生干扰。
如果本设备确实对无线电视接收造成有害干扰 (可通过关闭和打开设备来验证), 我们建议用户尝试以下方法来消除干扰:
· 调整接收天线的方向或位置。
· 增加设备和接收器之间的距离。
· 将设备连接到与接收器不同的电源插座上。
· 咨询经销商或有经验的无线电技术人员, 寻求帮助。
CMT ID: 新高: Noble Hifi, LLC KC ID: R-R-NOH-Rex5

Declarations and Warnings
Disconnect previous devices before pairing a new device.
WARNING!
Long-term exposure to high noise volumes may cause permanent hearing loss. Do not use the Noble FoKus Rex5 earphones in locations prohibiting the use of electronic equipment.
Consult your physician prior to using your Noble FoKus Rex5 earphones if you have a pacemaker or other electrical medical devices.
These limits are designed to provide reasonable protection against harmful interference in a residential installation. This equipment generates uses and can radiate radio frequency energy and, if not installed and used in accordance with the instructions, may cause harmful interference to radio communications. However, there is no guarantee that interference will not occur in a particular installation. If this equipment does cause harmful interference to radio or television reception, which can be determined by turning the equipment off and on, the user is encouraged to try to correct the interference by one or more of the following measures:
· Reorient or relocate the receiving antenna.
· Increase the separation between the equipment and receiver.
· Connect the equipment into an outlet on a circuit different from that to which the receiver is connected.
· Consult the dealer or an experienced radio/TV technician for help.
CMT ID: 新高: Noble Hifi, LLC KC ID: R-R-NOH-Rex5

FCC STATEMENT
FCC ID: 2AT8X-NFOKUSREX5
This device complies with Part 15 of the FCC Rules. Operation is subject to the following two conditions:
(1) This device may not cause harmful interference, and
(2) This device must accept any interference received, including interference that may cause undesired operation.
Warning: Changes or modifications not expressly approved by the party responsible for compliance could void the user's authority to operate the equipment.
NOTE: This equipment has been tested and found to comply with the limits for a Class B digital device, pursuant to Part 15 of the FCC Rules. These limits are designed to provide reasonable protection against harmful interference in a residential installation. This equipment generates uses and can radiate radio frequency energy and, if not installed and used in accordance with the instructions, may cause harmful interference to radio or television reception, which can be determined by turning the equipment off and on, the user is encouraged to try to correct the interference by one or more of the following measures:
· Reorient or relocate the receiving antenna.
· Increase the separation between the equipment and receiver.
· Connect the equipment into an outlet on a circuit different from that to which the receiver is connected.
· Consult the dealer or an experienced radio/TV technician for help.
CMT ID: 新高: Noble Hifi, LLC KC ID: R-R-NOH-Rex5